



CONNOR SPORTS

PROTRAXX™

SPIKE RESISTANT MULTI SPORT SURFACE



TRACTION
GET SOME

CHAMPIONS OF
SPORT



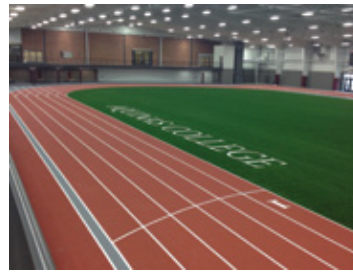
connorsports.com



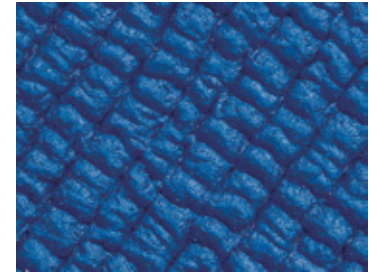
Prefabricated rubber sport surface made from synthetic & natural rubber compounds.



Unique symmetric bottom layer design provides outstanding shock absorption and uniform performance.



I.A.A.F. certified and suitable for all NCAA and International events.



Calandared surface provides outstanding traction & durability.



PROTRAXX / LIGHT BLUE PX-20
CUSTOM COLORS AVAILABLE

BASE LAYER

The Waffle-like Structure of the Base Layer Offers Improved Shock Absorption and Reduced Muscular Fatigue.

CORE LAYER

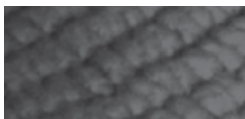
Virgin Rubber, Non-porous and Extremely Durable for Both Indoor and Outdoor Use.

TEXTURE LAYER

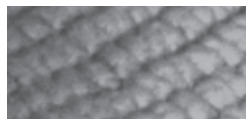
100% Color! No Fillers. No Speckles. Only Pure Rubber for the Most Brilliant Colors

THICKNESS

ProTraxx Spike Resistant Multi Sport Surface is Available in 6, 8, 10, 12, 13 & 14mm Thickness.



DARK GRAY PX-41



LIGHT GRAY PX-40



DARK GREEN PX-31



LIGHT GREEN PX-30



MAHOGANY PX-25



DARK BLUE PX-21



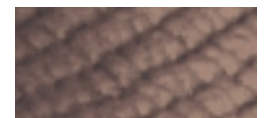
LIGHT BLUE PX-20



RED PX-10



YELLOW PX-50



BROWN PX-60

For more information on how Protraxx can benefit your athletes, call 800-283-9522 or email us at info@connorsports.com.